

Specification Sheet

Supersonic Mobile Writing Board



Supersonic Mobile Writing board

PRODUCT DESCRIPTION

The Supersonic Mobile Writing Board merges acoustic performance with flexible functionality in a bold, industrial design. Built to improve acoustics and foster creativity, this mobile freestanding floor screen features a sound-absorbing core and an integrated ceramic writing surface - ideal for collaborative spaces that require both focus and interaction.

Engineered for longevity, the board is designed for easy disassembly and repair, making it a future-ready choice for adaptable work environments.

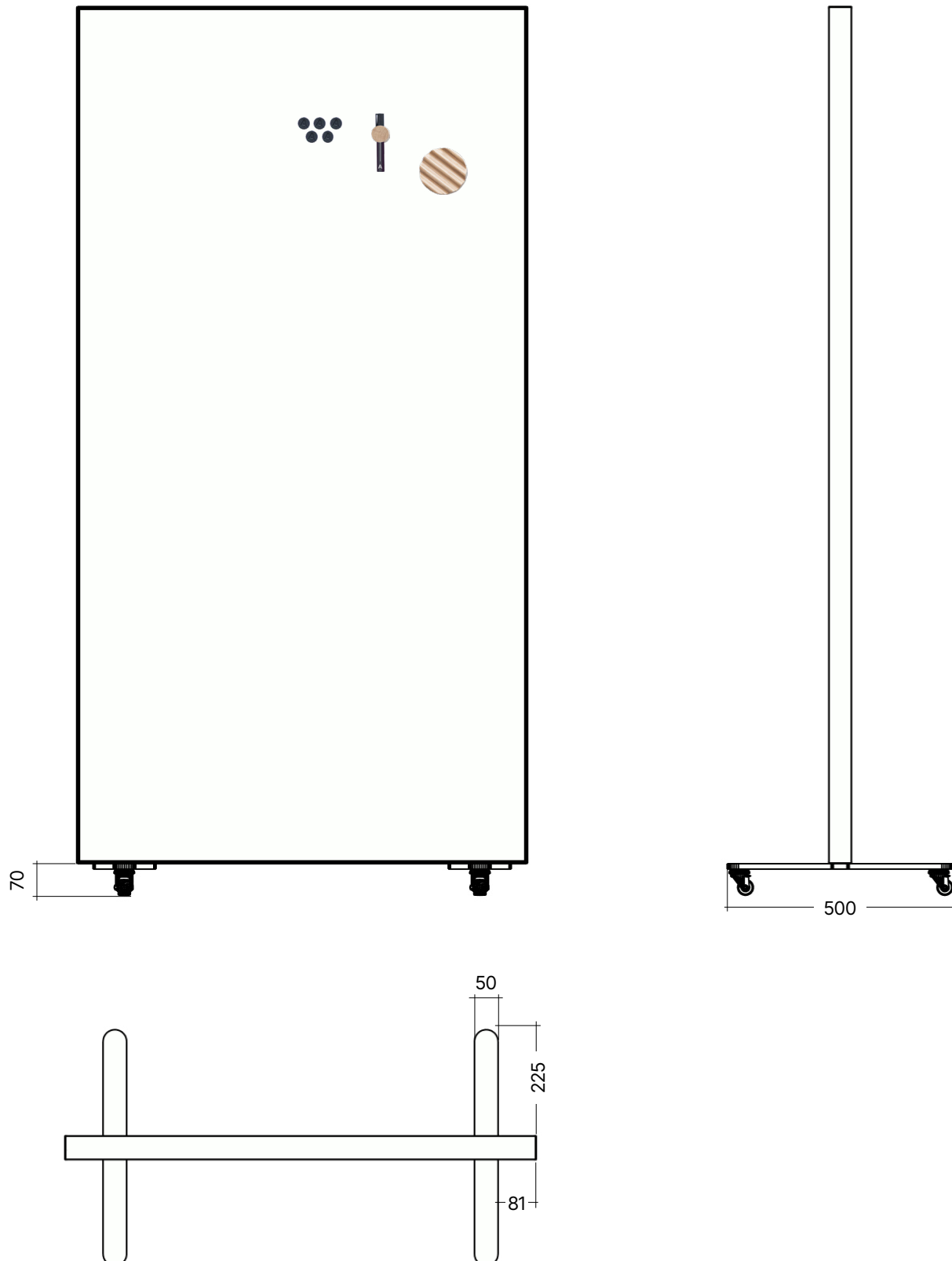
FEATURES

- The front consists of a magnetic ceramic steel plate designed for ideation and creativity.
- The ceramic surface provides a durable writing area, ideal for use with whiteboard pens.
- Changeable canvas for freedom of change and extended longevity.
- Raw aluminium frame finish: A sleek, industrial expression that fits effortlessly into modern interiors.
- Smooth-rolling wheels and a lightweight build support easy movement and flexible workflows.

Supersonic Mobile Writing board

DIMENSIONS – Depth: 50mm

W:1000 x H:1900 mm (Excl. wheels)



Supersonic Mobile Writing Board

COLOURS / FINISHES

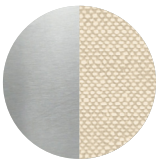
The Supersonic Mobile Writing Board comes in a Raw Aluminium frame finish, offering a sleek, industrial expression with clean lines and refined simplicity, a timeless choice that adds a bold, architectural edge to any interior.

BASE / FEET

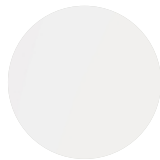


Orange Wheels

FRAME / SURFACES



Raw Alu / Muted Earth



Ceramic Surface

ACCESSORIES



Eraser (Magnetic)



Marker / Holder (Magnetic)



Magnets (5pcs.)

Supersonic Mobile Writing Board

COMPONENTS

Frame:	Aluminium profile made from 75 % upcycled post-consumer aluminium scrap, also available in a 100 % upcycled post-consumer aluminium version.
Acoustic material:	40 mm PET containing 50% fibres from recycled plastic bottles.
Writing Surface:	Ceramic steel surface in white, featuring a magnetic core. The surface is exceptionally durable, scratch-resistant, and ideal for use with dry-erase markers.
Canvas:	Replaceable polyester textile made from 100% recycled polyester fibres.
Corner inserts:	Precision-milled metal inserts eliminating exposed joints or sharp edges.
Feet / Base:	Aluminium
Wheels:	Plastic rim with rubber tread.

PRODUCT CARE

Writing Board:	Dry-erase markings can be easily wiped away without ghosting or staining, ensuring a clean slate after every use. Tougher marks, semi-permanent inks, and permanent inks can be removed with solvent-based cleaner.
Frame:	Regularly clean with a soft brush or vacuum to prevent dirt from accumulating. Disinfect using antibacterial wipes or sprays, ensuring you follow the manufacturer's instructions.
Canvas:	<p>Regularly dust with a soft brush or vacuum to prevent dirt accumulation. Treat stains on the canvas promptly to prevent them from setting. Absorb excess liquid immediately.</p> <p>Use antibacterial wipes or sprays to disinfect, always following the manufacturer's instructions.</p> <p>Machine washing is applicable only for the detachable Supersonic Canvas. Remove the canvas carefully using the AKUART hand tag. The Canvas is washable at temperatures up to 60°C. Ensure it is completely dry before remounting.</p>